

INSIGHTS INTO OUR SERVICE PORTFOLIO

- [✓] Individual
- [✓] Remote controlled
- [✓] Automated



STATIONARY



Stationary handling

- [✓] Project-related individual production
- [✓] Task-related design
- [✓] Optimised energy consumption
- [✓] Continuous availability thanks to electric operation
- [✓] Modular design
- [✓] Different operating modes:
 - » directly from the large cabin
 - » remotely controlled
 - » assistant-controlled
 - » fully automated

SPECIAL CONSTRUCTION

OBX V



Crane for flotsam

- » Sorting carriage with integrated saw in the gripper



Telescopic loader

- » 2-fold telescopic, undercarriage on rails
- » Units installed in the undercarriage
- » Reach: 7m, lifting capacity: 3000 kg

ASX III



Remote Control

- » Control stand behind glass – works under ATEX requirements
- » 8m arm system, anchored by means of foundation plate
- » Lifting capacity: 2000 kg

ESX



Slider in the kaolin bunker

- » Spatial mode of control, rail locking
- » Oil cooling via volume/convection
- » 17m arm system with scraper tool

RAIL-GUIDED

OBX V



Handling concept

- [✓] Optimised transport routes
- [✓] Spatial separation between input, sorting and handling
- [✓] Optimisation of usable area
- [✓] Additional storage or conveyor space between the rails
- [✓] No loader manoeuvring area (approx. 100m² per loader)
- [✓] Material access / handling at any time
- [✓] Gentle machine handling
- [✓] Driver can concentrate on handling
- [✓] No risk of collision when reversing on the rail
- [✓] Rail track can be extended as required
- [✓] Travelling speed up to 190 m/min
- [✓] Additional units can be controlled from the large driver's cabin
- [✓] The operator can monitor the hall and the process
- [✓] Savings in operating costs
- [✓] One sorting carriage can replace several excavators

RSX



LGX II



REMOTE

LEVEL I



Remote control – with a view of the crane

- » Crane control from an external cabin with a direct view of the work process
- » Power unit outside the work zone
- » Operator protected from noise, air pollution and odours
- » Camera systems support crane operation

LEVEL II



Long distance assistance system

- » Crane control from an external cabin without a direct view of the work process - supported by camera systems
- » Partial automation guides the crane along predefined paths at the touch of a button
- » Manual material pick-up and delivery via the screen or the camera system

LEVEL III



Full automation

- » Crane controls itself according to specifications
- » External intervention, control or interruption possible at any time in the event of a malfunction
- » Certain requirements must be met for automatic operation. These are defined as part of the project. For example, material properties, safety measures, handling volume, etc.

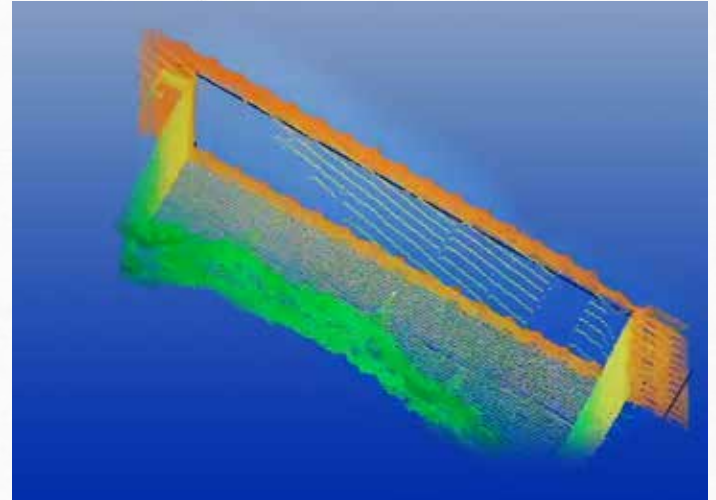


Illustration: A scanner is used to create a height profile and read out the data for automation

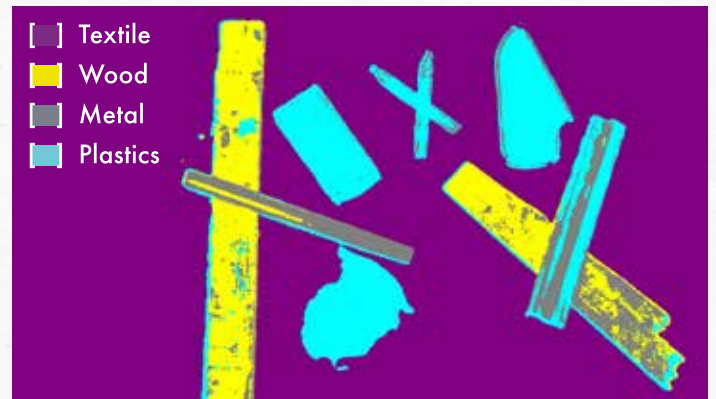


Illustration: Conceptual approach to material recognition using AI

BALJER ZEMBROD

M A S C H I N E N B A U



Baljer & Zembrod GmbH & Co. KG

Max-Planck-Straße 8, 88361 Altshausen
Germany

Phone +49 (0) 7584 295-47, Fax +49 (0) 7584 295-45
mail@bz.ag, www.bz.ag



BZH SARL

Chemin de la Briquerie, 51300 Marolles
France

Tél. +33 3 26 74 63 6, Fax +33 3 26 74 07 16
contact@bzh-sarl.com, www.bzh-sarl.com



Baljer & Zembrod Sp. z o.o.

ul. Cygana 4/211, 45-131 Opole
Rzeczpospolita Polska

Tel. +48 692 001 417, Fax +48 77 544 93 95
baljer@baljer.pl, www.baljer.pl



Baljer-Zembrod spol. s.r.o.

Trneckova 1212, 68301 Rousínov
Česká republika

Tel. +420 548 216 456, Fax +420 548 2162 70
mail@baljer-zembrod.cz, www.baljer-zembrod.cz

